

OBERFELD SNOWCAP

FOR LEASE ↘

170 Jarry E.
Montréal, QC

Adam Lieberman *

Vice President,
Commercial Real Estate Services
514.502.2341
adam@oberfeldsnowcap.com

*Commercial real estate broker



Overview

SQUARE FOOTAGE	2,570 SF
ADDRESS	170 Jarry E., Montreal, QC
AVAILABILITY	Immediately
NET RENT	Ask listing brokers
ADDITIONNAL RENT	Ask listing brokers

IN THE HEART
OF VILLERAY



EXCEPTIONAL
COMMERCIAL VISIBILITY



2,570 SQ FT
ACROSS 3 FLOORS



**OBERFELD
SNOWCAP**

Area Demographics

RADIUS : 3KM

2025 Population
235,751

Total Households
109,299

2025 Daytime Population
250,555

Average Household
Income
CA\$103,737

Median Age
36.2

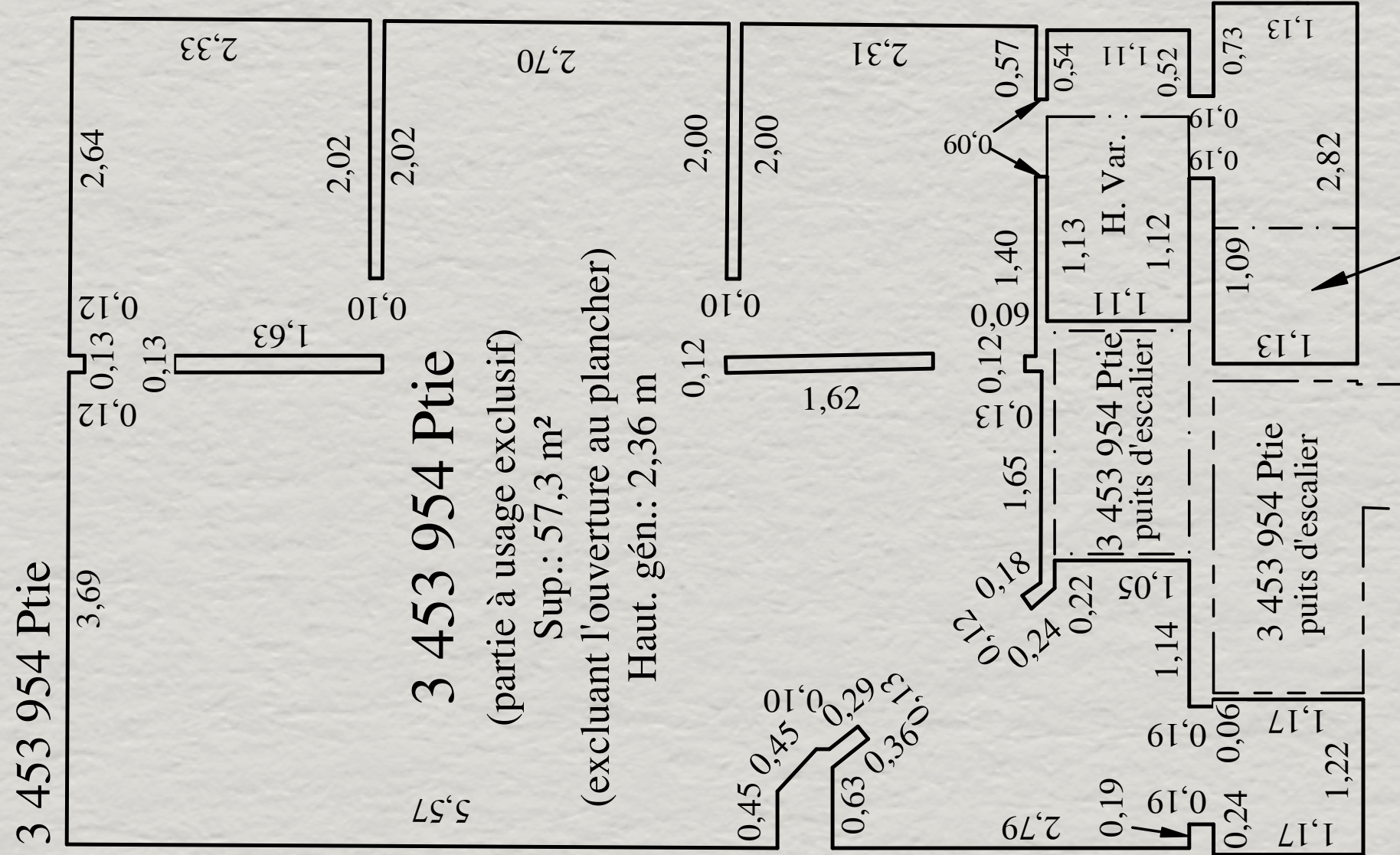
Average Household
Expenditure
CA\$100,732



Key Facts

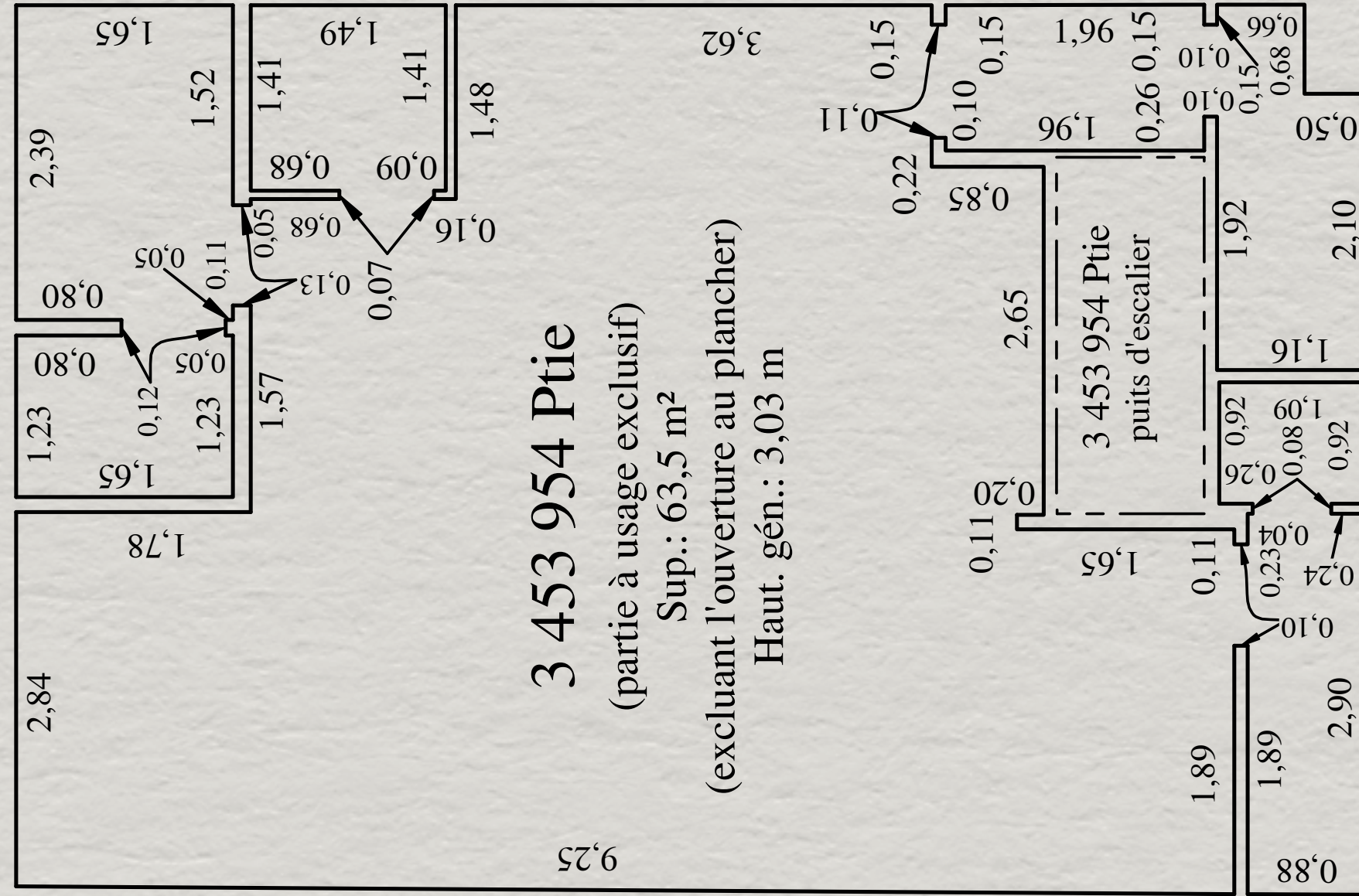
Demographic Data Source: Environics (2024)

Plan



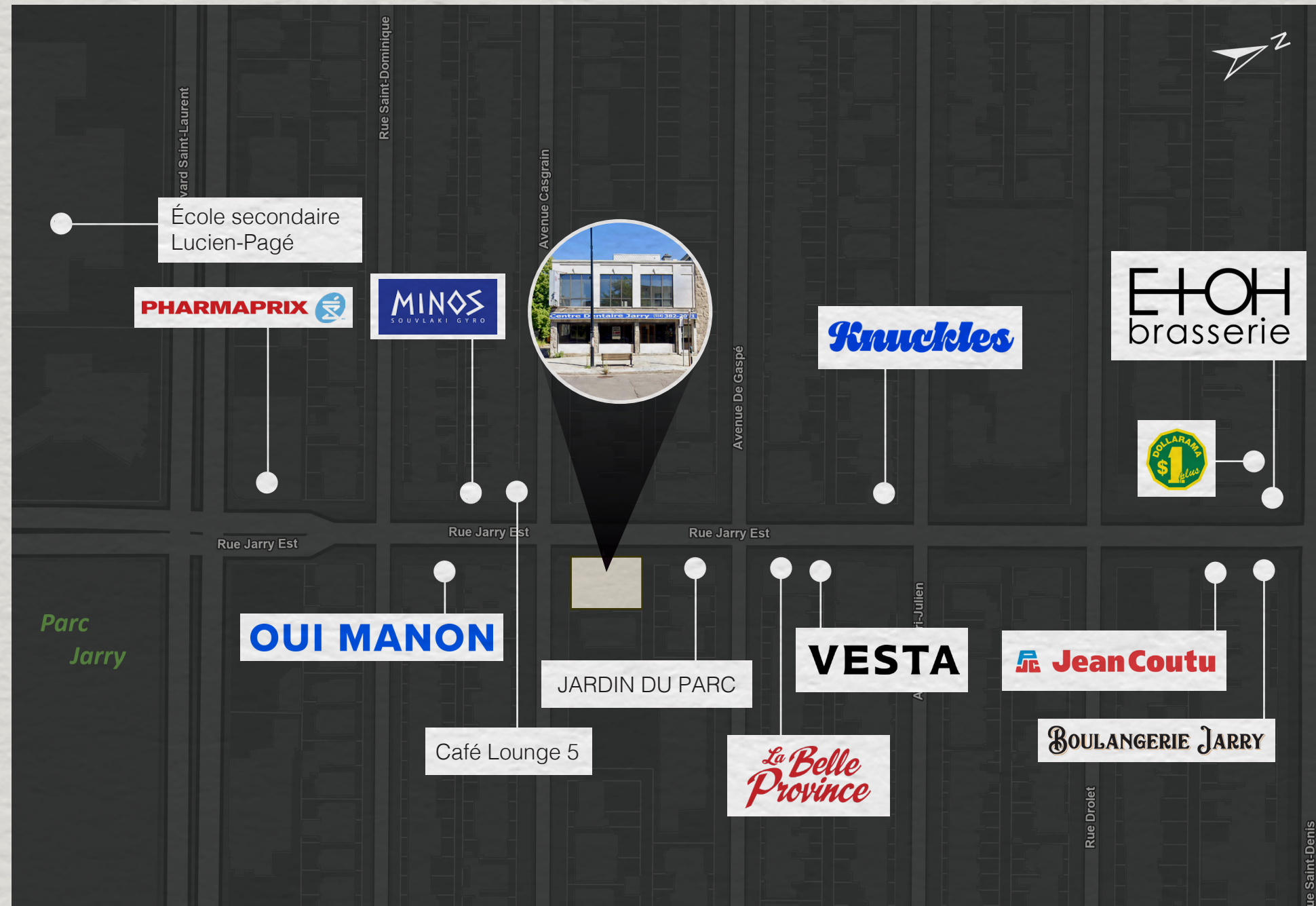
Ground Floor

Plan



1st Floor

Retailer Map



www.oberfeldsnowcap.com

OBERFELD SNOWCAP

Adam Lieberman *

Vice President
Commercial Real Estate Services
514.502.2341
adam@oberfeldsnowcap.com