

**OBERFELD SNOWCAP**

FOR LEASE ↘

# 1819 Dollard Ave

Lasalle, QC

*Le Celtis*

**Manon Larose \***

Managing Director  
Commercial Real Estate Services  
438.990.8968  
[manonl@oberfeldsnowcap.com](mailto:manonl@oberfeldsnowcap.com)

\*Chartered real estate broker, DA

**Michelle Marcotte-Blart \*\***

Director  
Commercial Real Estate Services  
514.972.6163  
[michelle@oberfeldsnowcap.com](mailto:michelle@oberfeldsnowcap.com)

\*\*Commercial real estate broker



# Overview

SQUARE FOOTAGE

TBD

ADDRESS

1819 Dollard Ave, Lasalle, QC

AVAILABILITY

Immediate

NET RENT

Ask listing brokers

ADDITIONAL RENT

\$12.00/SF

AT THE BASE OF A 166 UNIT  
RESIDENTIAL BUILDING



IN THE HEART  
OF LASALLE



DENSELY POPULATED  
NEIGHBOURHOOD



**OBERFELD  
SNOWCAP**

# Area Demographics

RADIUS : 1KM

2025 Population  
**23,962**

Total Households  
**9,710**

2025 Daytime Population  
**23,405**

Average Household  
Income  
**CA\$84,580**

Median Age  
**37.6**

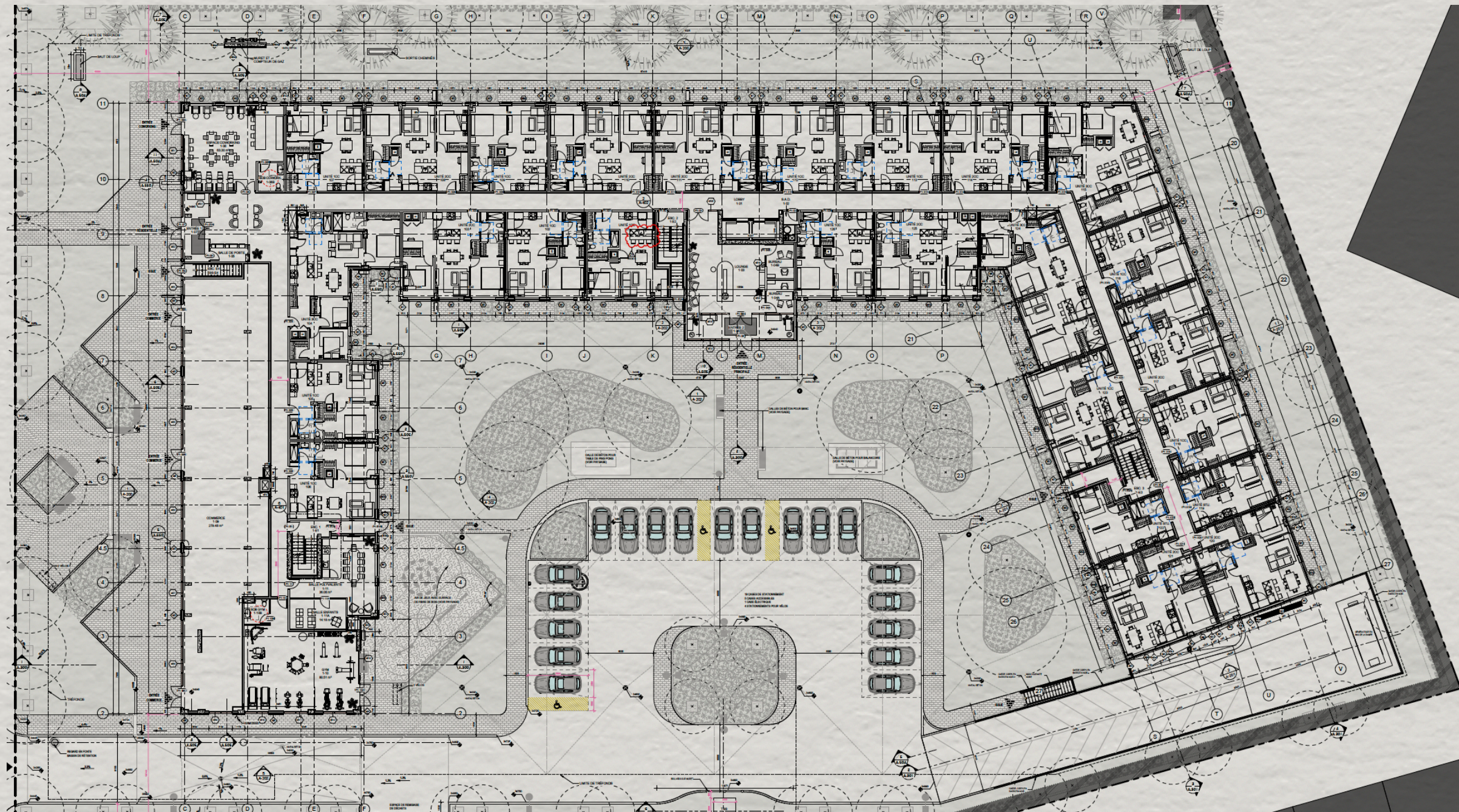
Average Household  
Expenditure  
**CA\$83,770**



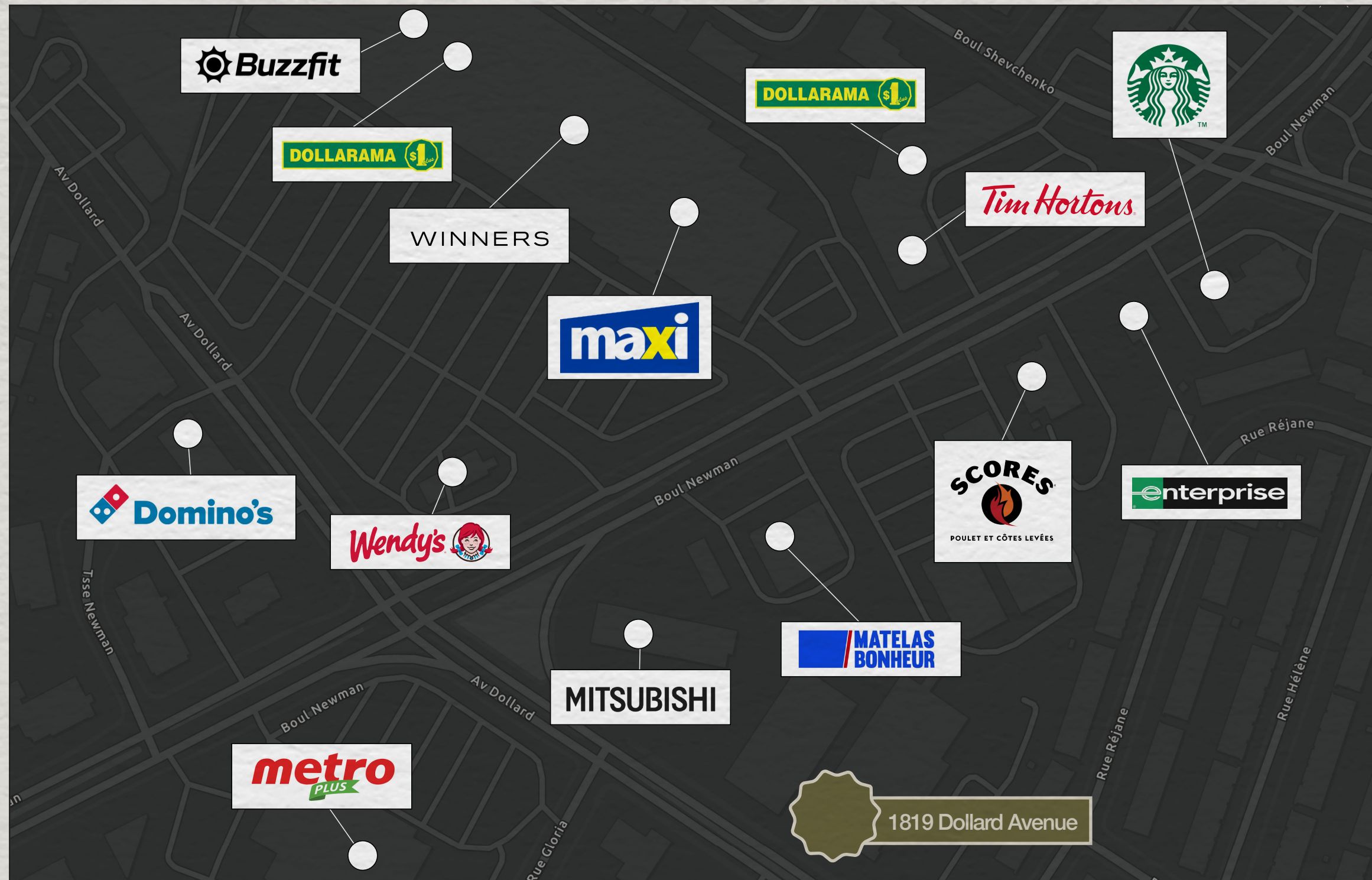
## Key Facts

Demographic Data Source: Environics (2024)

# Plan



# Retailer Map



[www.oberfeldsnowcap.com](http://www.oberfeldsnowcap.com)

# OBERFELD SNOWCAP

**Manon Larose \***

Managing Director  
Commercial Real Estate Services  
438.990.8968  
[manonl@oberfeldsnowcap.com](mailto:manonl@oberfeldsnowcap.com)

**Michelle Marcotte-Blart \*\***

Director  
Commercial Real Estate Services  
514.972.6163  
[michelle@oberfeldsnowcap.com](mailto:michelle@oberfeldsnowcap.com)