

**OBERFELD SNOWCAP**

**FOR SALE** ↘

**Route 335 et Rang  
Sainte-Henriette**  
Saint-Lin-Laurentides, QC

*Projet Dune - New Project*

**Robert Lefort \***

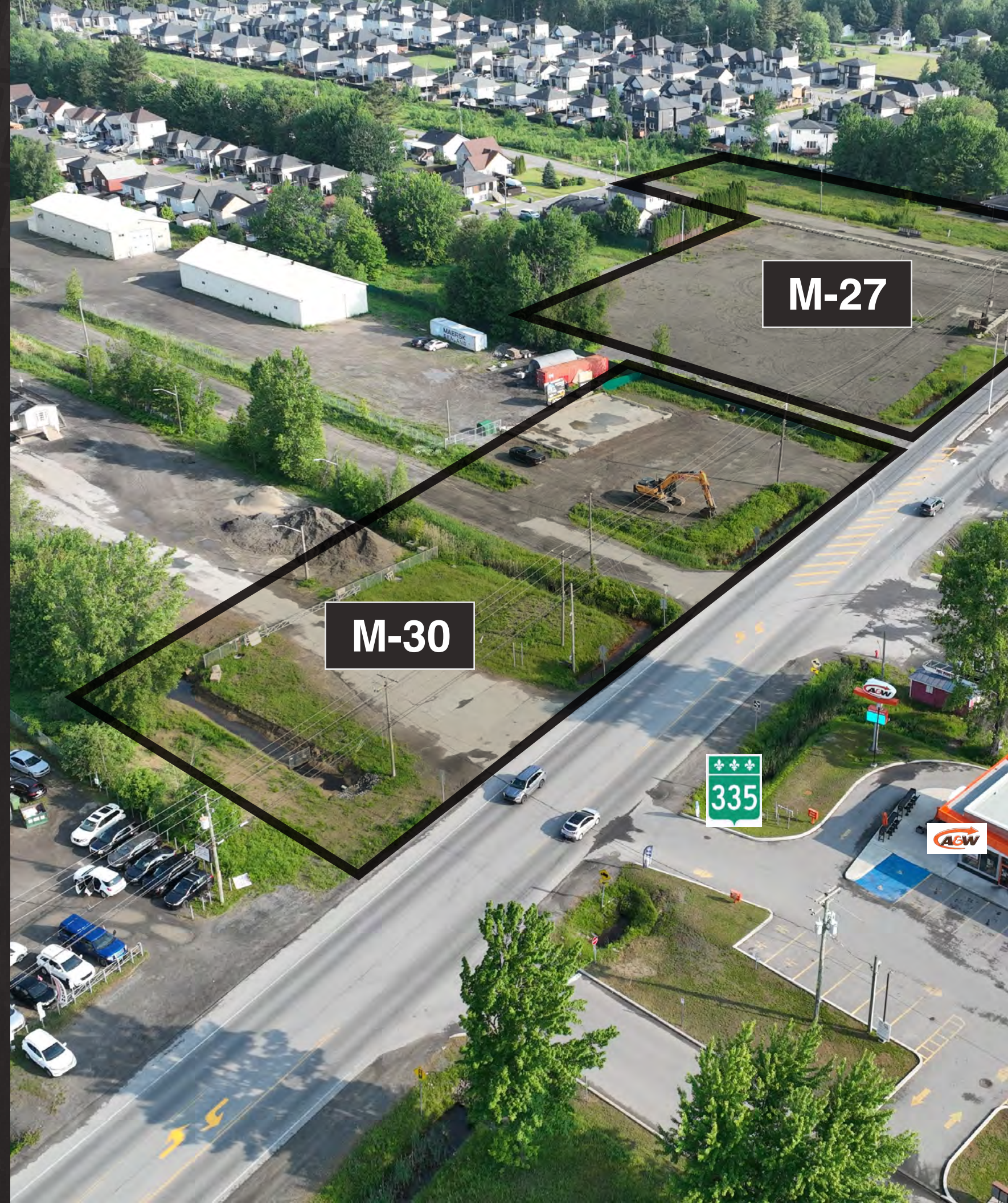
Director  
Commercial Real Estate Services  
514.806.4819  
[robertl@oberfeldsnowcap.com](mailto:robertl@oberfeldsnowcap.com)

\*Commercial real estate broker

**Tiffany Mazzaferro \***

Account executive  
Commercial Real Estate Services  
438.483.3016  
[tiffany@oberfeldsnowcap.com](mailto:tiffany@oberfeldsnowcap.com)

\*Commercial real estate broker



# Overview

At the intersection of Route 335 and Rang St-Henriette, this rapidly developing area is ready to welcome local shops and services. Designed as a true strategic hub, it offers a vibrant environment right at the entrance of the St-Lin-des-Laurentides recreational park. A prime location, a growing clientele, and a project focused on the future.

## SQUARE FOOTAGE

M-27: 63,487 SF | M-30: 139,344 SF

## ADDRESS

Route 335 & Rang Sainte-Henriette, Saint-Lin-Laurentides, QC

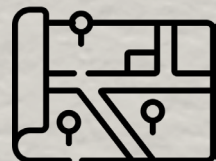
## AVAILABILITY

Immediate

## ASKING PRICE

Communicate with listing brokers

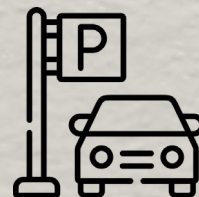
LOCATED NEAR AN INDUSTRIAL  
AREA WITH APPROXIMATELY  
100 BUSINESSES



NEW CONSTRUCTION  
WITH POSSIBILITY  
OF PERSONALIZATION



PARKING  
AVAILABLE

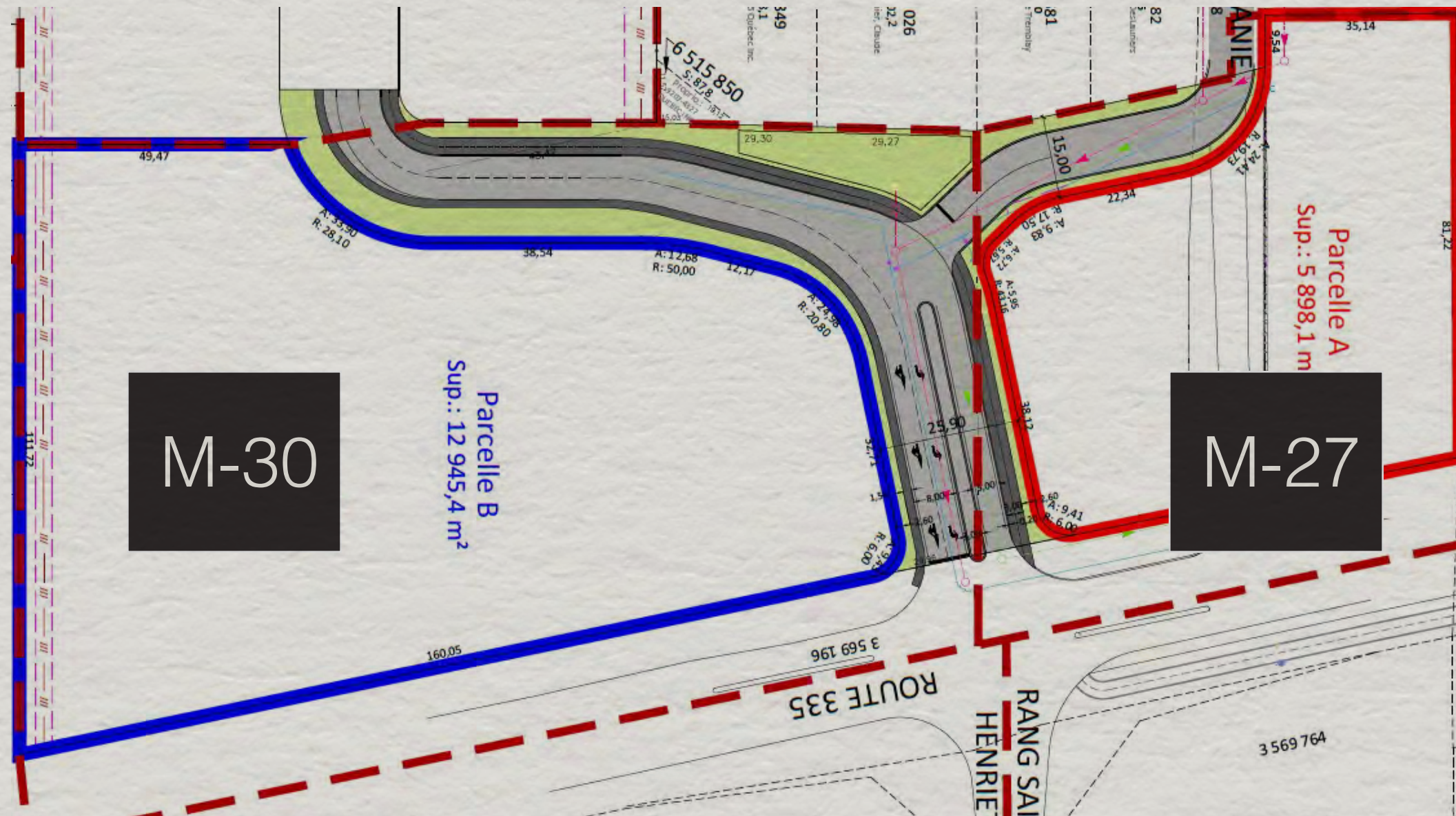


THE SITE ENTRANCE WILL BE  
THE MAIN ACCESS TO THE  
RECREOTOURISM PARK



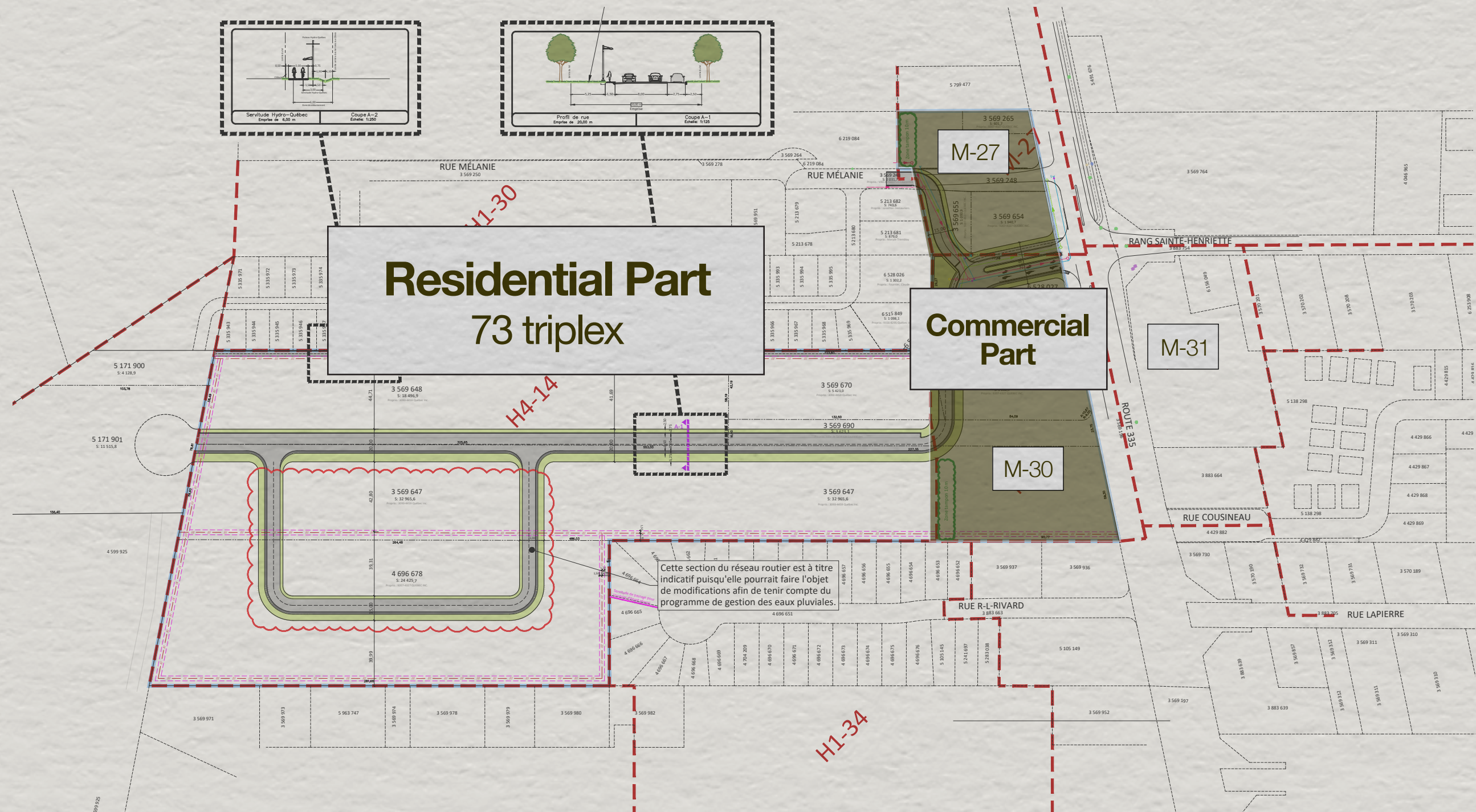
**OBERFELD  
SNOWCAP**

# Plan

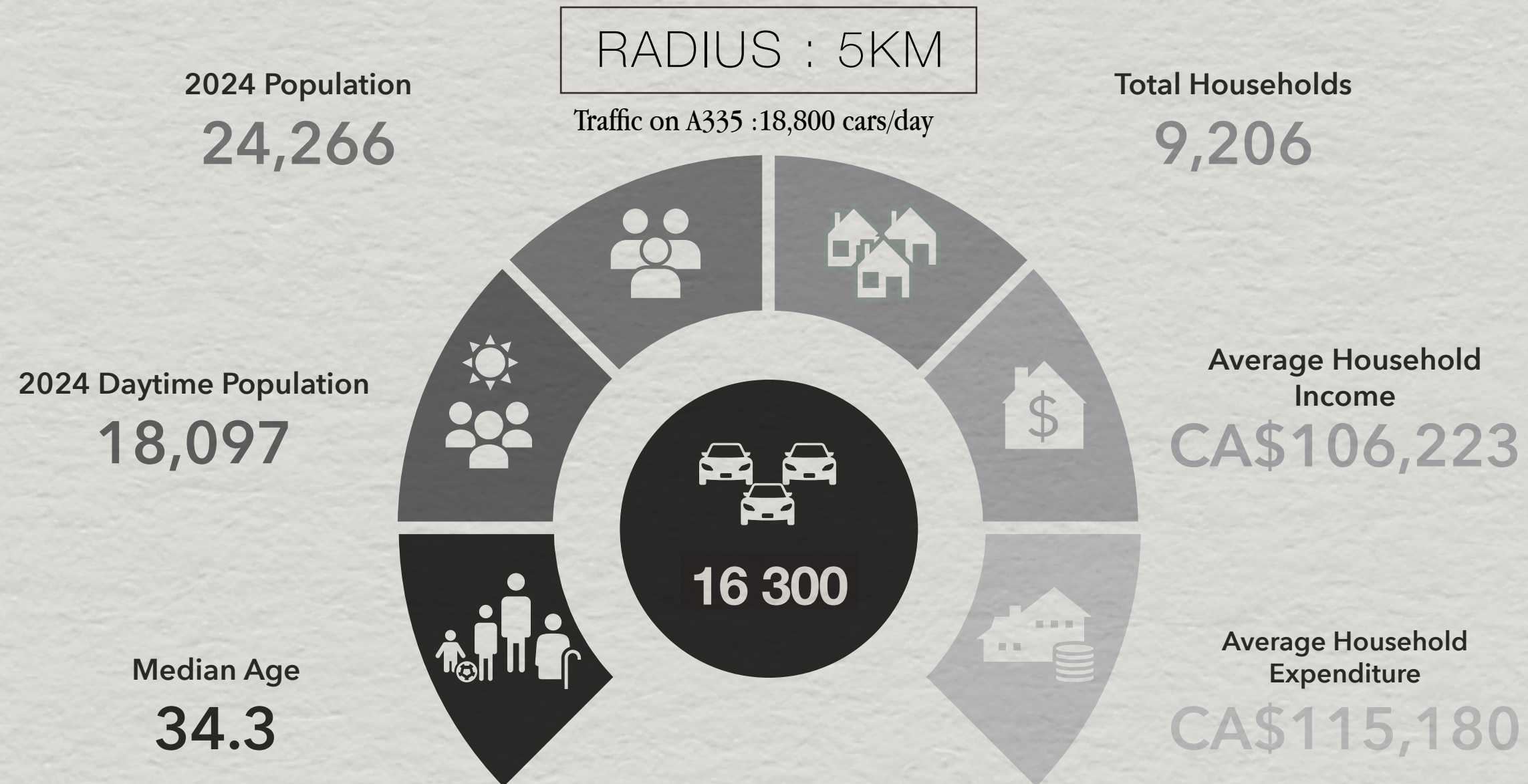




# Layout plan



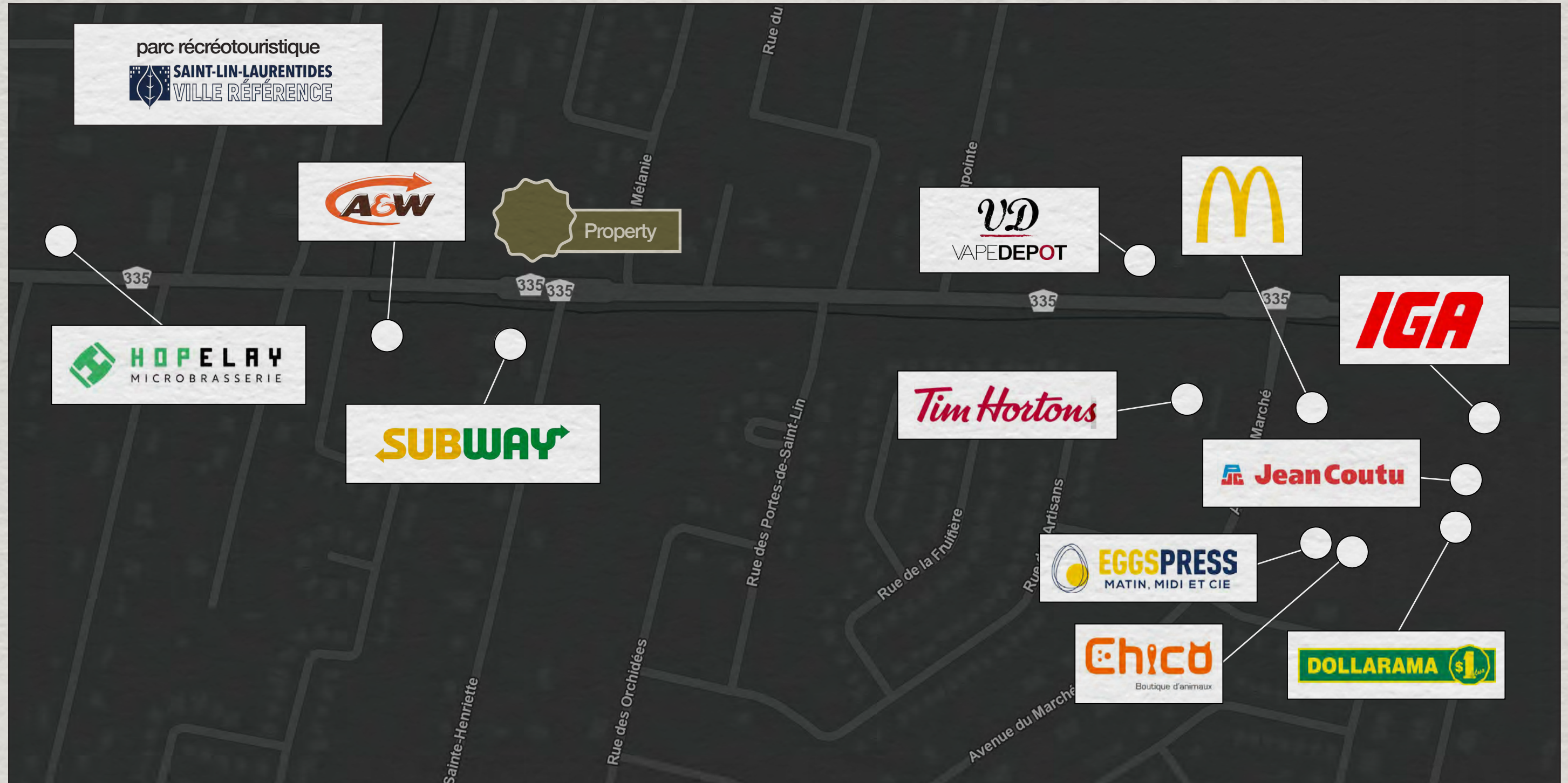
# Area Demographics



## Key Facts

Demographic Data Source: Environics (2024)

# Retailer Map



# Land M-30 Offices & Services



# Residential Project



# Aerial View



[www.oberfeldsnowcap.com](http://www.oberfeldsnowcap.com)

# OBERFELD SNOWCAP

## **Robert Lefort \***

Director  
Commercial Real Estate Services  
514.806.4819  
[robertl@oberfeldsnowcap.com](mailto:robertl@oberfeldsnowcap.com)

## **Tiffany Mazzaferro\***

Account Executive  
Commercial Real Estate Services  
438.483.3016  
[tiffany@oberfeldsnowcap.com](mailto:tiffany@oberfeldsnowcap.com)