

OBERFELD SNOWCAP

FOR LEASE ↘

170 René-Lévesque E

Montreal, QC

Manon Larose *

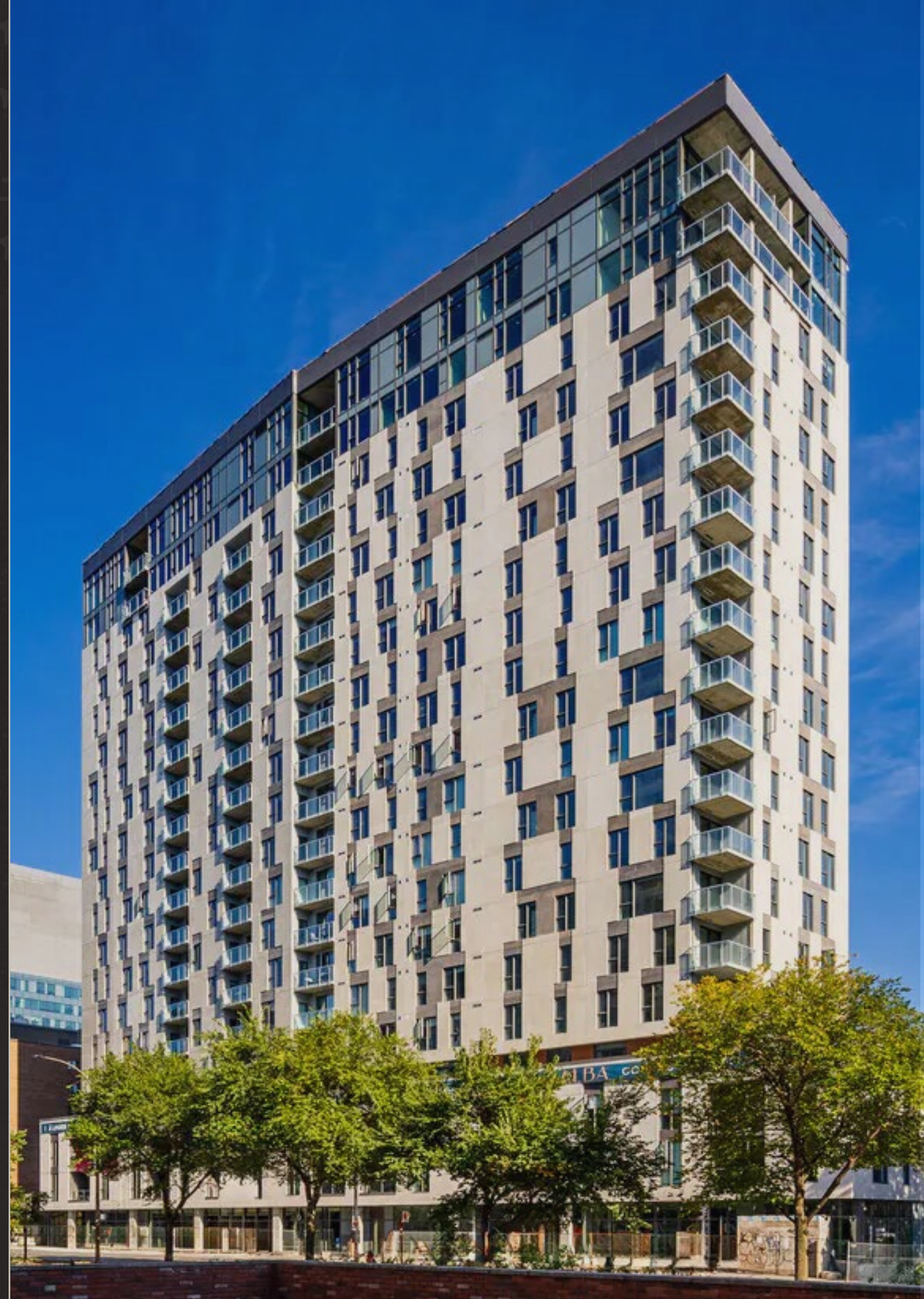
Managing Director
Commercial Real Estate Services
438.990.8968
manonl@oberfeldsnowcap.com

*Chartered real estate broker, DA

Michelle Marcotte-Blart **

Director
Commercial Real Estate Services
514.972.6163
michelle@oberfeldsnowcap.com

**Commercial real estate broker



Overview

SQUARE FOOTAGE	1,714 SF
ADDRESS	170 René Lévesque E, Montreal, QC
AVAILABILITY	Immediate
NET RENT	Ask listing brokers
ADDITIONAL RENT	\$15 PSF

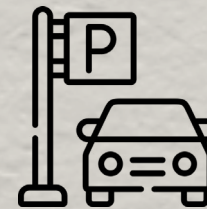
VENTILATION
AVAILABLE



PRIME
LOCATION



POSSIBILITY TO
INCLUDE PARKING



**OBERFELD
SNOWCAP**

Area Demographics

RADIUS : 1KM

2024 Population
34,356

Total Households
20,055

2024 Daytime Population
171,625

Average Household
Income
CA\$99,297

Median Age
35.1

Average Household
Expenditure
CA\$88,670



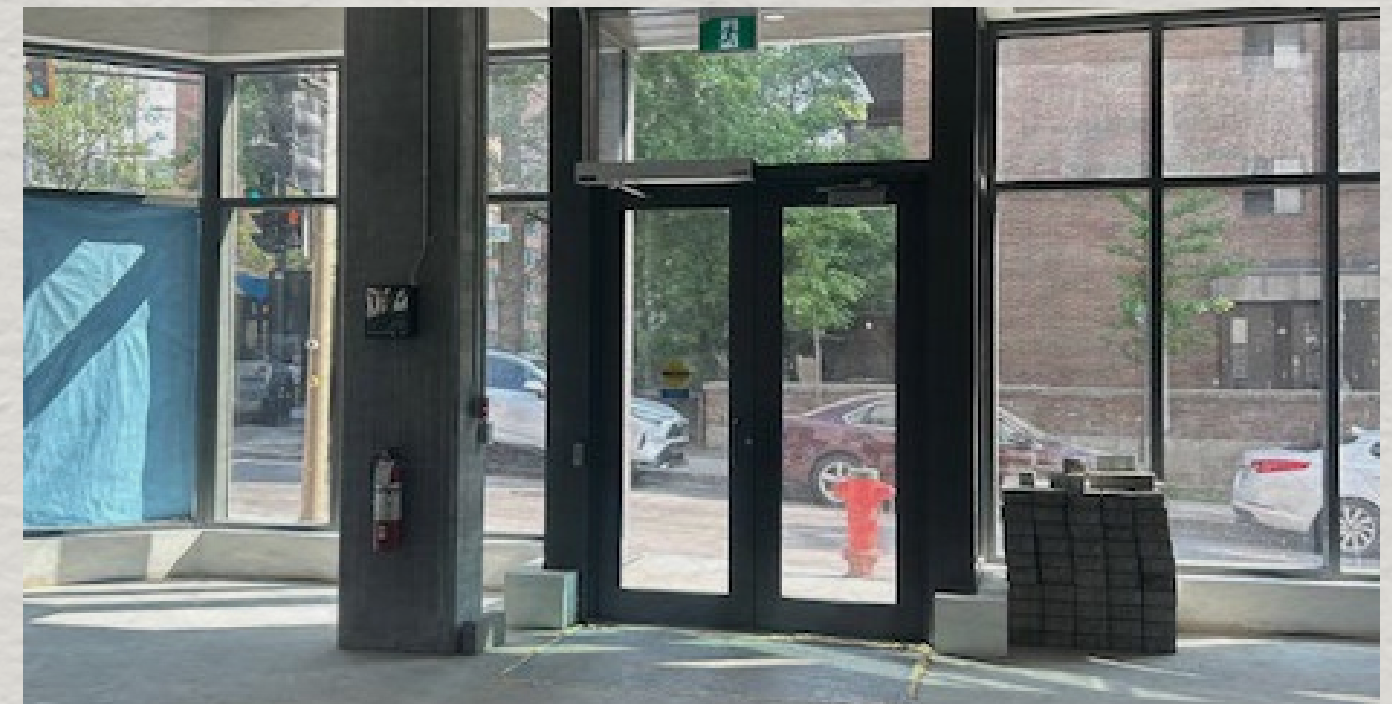
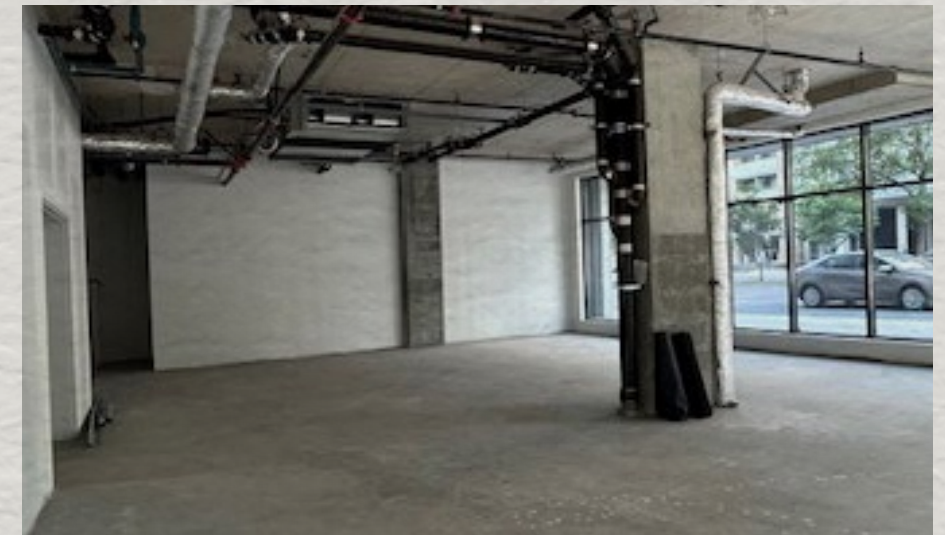
Key Facts

Demographic Data Source: Environics (2024)

Plan



Images



www.oberfeldsnowcap.com

OBERFELD SNOWCAP

Manon Larose *

Managing Director
Commercial Real Estate Services
438.990.8968
manonl@oberfeldsnowcap.com

Michelle Marcotte-Blart **

Director
Commercial Real Estate Services
514.972.6163
michelle@oberfeldsnowcap.com