

OBERFELD SNOWCAP

FOR LEASE ↘

**1327 Ste-Catherine W.
Montréal, QC**

Manon Larose *

Managing Director
Commercial Real Estate Services
438.990.8968
manonl@oberfeldsnowcap.com

*Chartered real estate broker, DA

Michelle Marcotte-Blart **

Director
Commercial Real Estate Services
514.972.6163
michelle@oberfeldsnowcap.com

**Commercial real estate broker

Molly O'Neil**

Account executive
Commercial Real Estate Services
514.348.1199
molly@oberfeldsnowcap.com

**Commercial real estate broker



Overview

SQUARE FOOTAGE

Ground Floor : 1,716 SF + Basement : 1,535 SF

ADDRESS

1327 Ste-Catherine W, Montréal, QC

AVAILABILITY

Immediate

NET RENT

Ask listing brokers

ADDITIONAL RENT

\$ 94.68 PSF

EXCELLENT
VISIBILITY



HIGH TRAFFIC



PRIME DOWNTOWN
LOCATION



SURROUNDED BY
TOP RETAILERS



**OBERFELD
SNOWCAP**

Area Demographics

RADIUS : 1KM

2024 Population
44,439

Total Households
25,973

2024 Daytime Population
132,685

Average Household
Income
CA\$84,416

Median Age
31.0

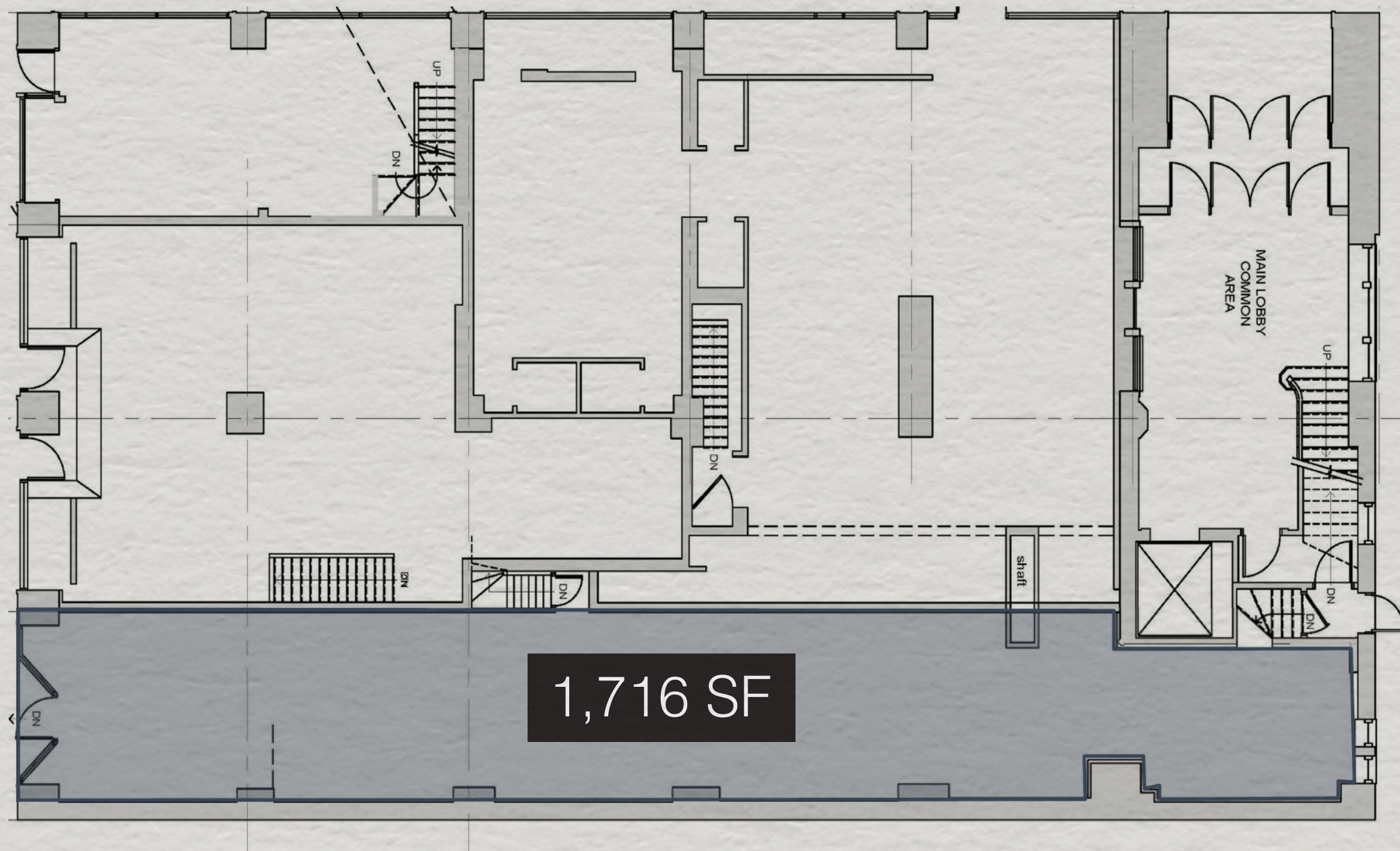
Average Household
Expenditure
CA\$80,380



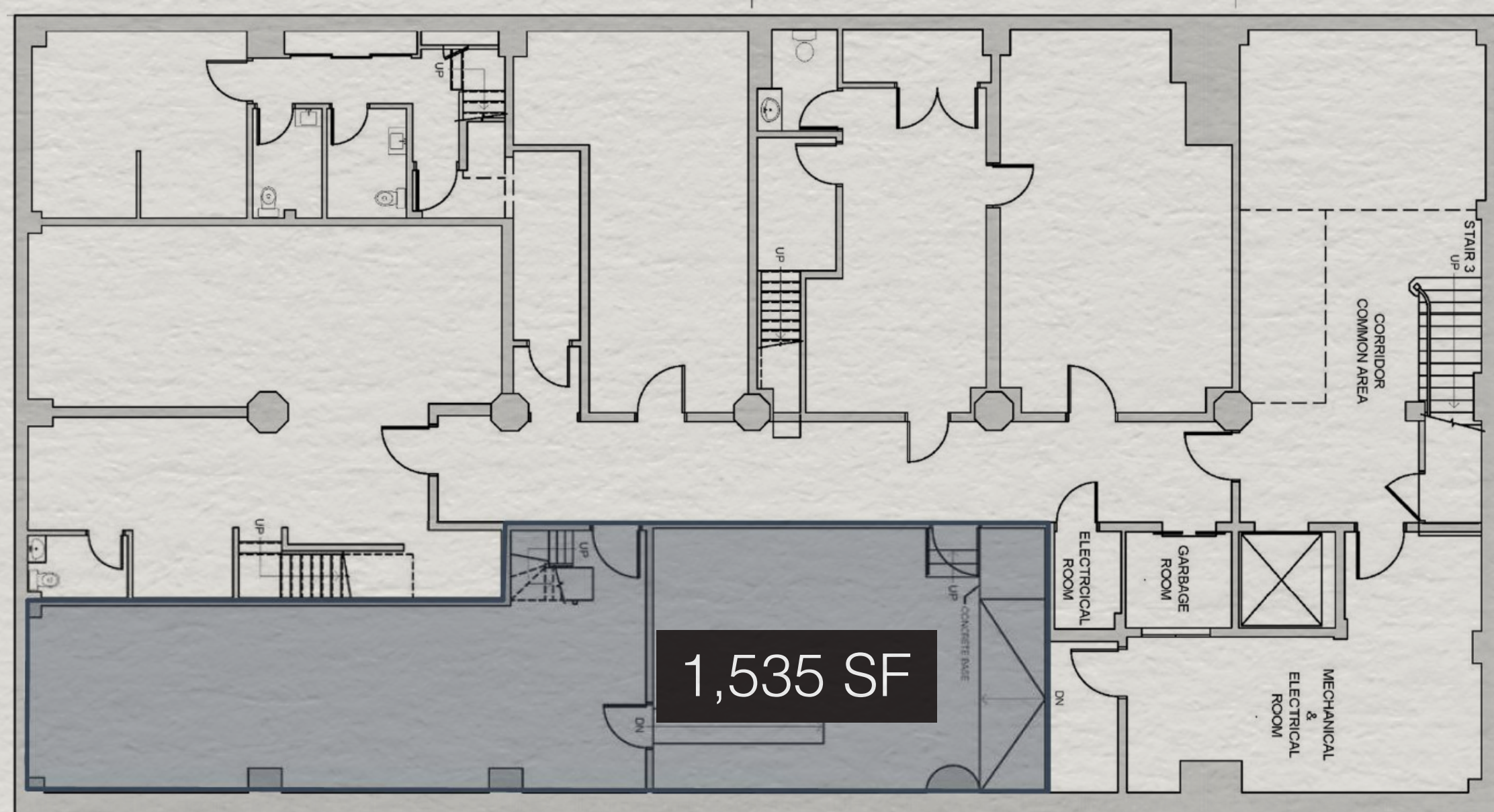
Key Facts

Demographic Data Source: Piipoint

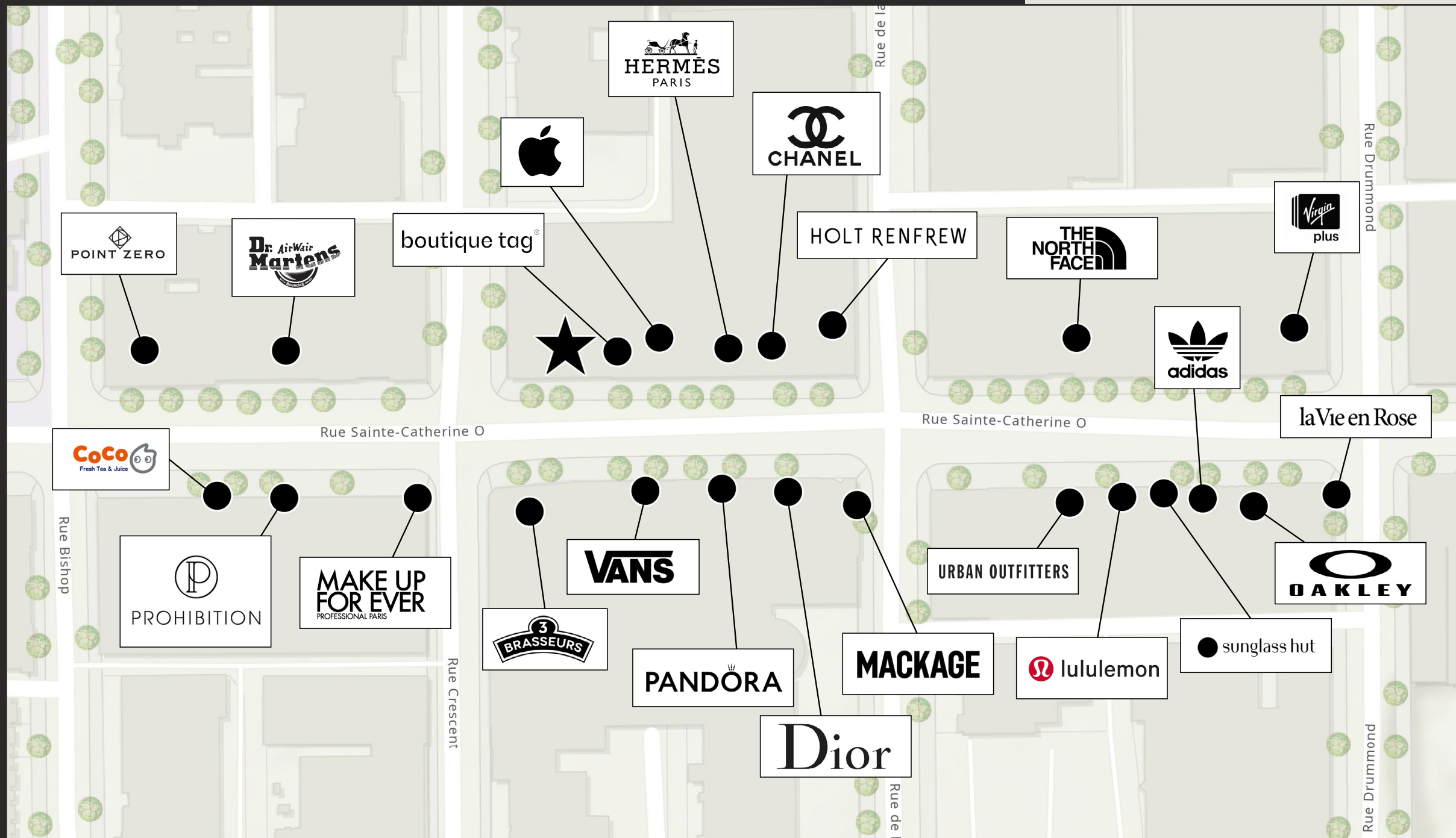
Plan - Ground Floor



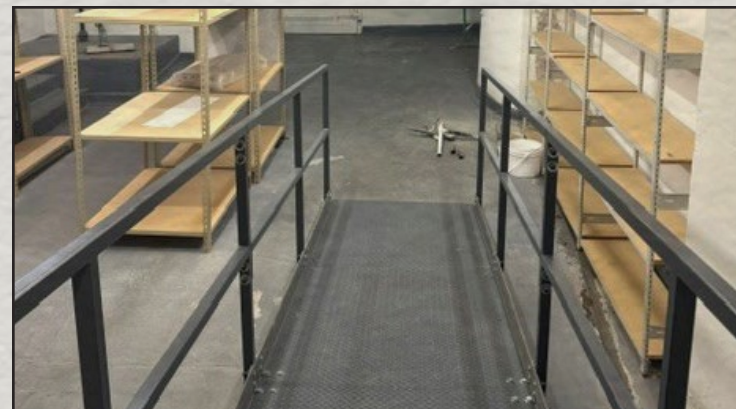
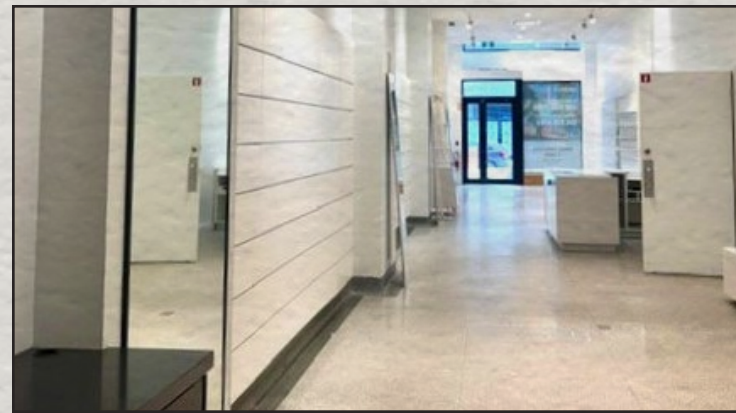
Plan - Basement



Retailer Map



Photos



www.oberfeldsnowcap.com

OBERFELD SNOWCAP

Manon Larose *

Managing Director
Commercial Real Estate Services
438.990.8968
manonl@oberfeldsnowcap.com

Michelle Marcotte-Blart **

Director
Commercial Real Estate Services
514.972.6163
michelle@oberfeldsnowcap.com

Molly O'Neil**

Account executive
Commercial Real Estate Services
514.348.1199
molly@oberfeldsnowcap.com