

OBERFELD SNOWCAP

FOR LEASE ↘

1099 Curé Labelle Blainville, QC

2ND floor

Robert Lefort *

Director
Commercial Real Estate Services
514.806.4819
robertl@oberfeldsnowcap.com

*Commercial real estate broker

Tiffany Mazzaferro *

Account Executive
Commercial Real Estate Services
438.483.3016
tiffany@oberfeldsnowcap.com

*Commercial real estate broker



Overview

SQUARE FOOTAGE

Office (2nd floor) : 1,100 SF

ADDRESS

1099 Boul. Curé-Labelle, Blainville, QC

AVAILABILITY

Immediate

NET RENT

Ask listing brokers

ADDITIONAL RENT

\$ 12v PSF

CO-TENANTS

BMO, Maxi, Jean-Coutu, Desjardins, Esso, Couche-Tard, Pharmaprix, Tim Horton's Club Piscine, etc.

2ND LARGEST CITY IN
THE LAURENTIANS



WELL-KNOWN
RETAILERS



NEAR A LARGE RESIDENTIAL
NEIGHBORHOOD

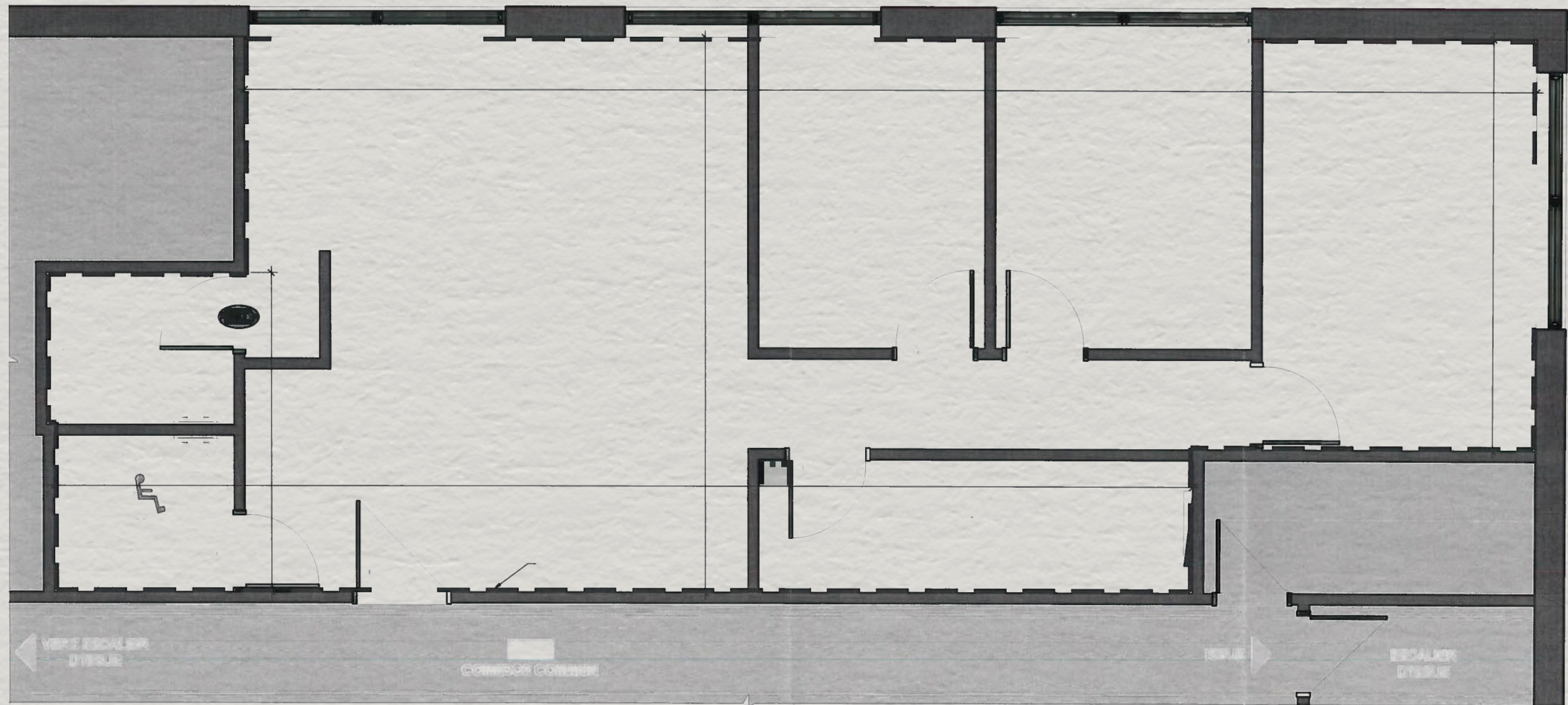


HIGH-TRAFFIC
AREA



**OBERFELD
SNOWCAP**

Plan



Aerial View



Photos



www.oberfeldsnowcap.com

OBERFELD SNOWCAP

Robert Lefort *

Director
Commercial Real Estate Services
514.806.4819
robertl@oberfeldsnowcap.com

Tiffany Mazzaferro*

Account Executive
Commercial Real Estate Services
438.483.3016
tiffany@oberfeldsnowcap.com