

**OBERFELD SNOWCAP**

FOR LEASE ↘

**12285-12421 Boul.  
Rodolphe-Forget**

**Montreal, QC**

**Manon Larose \***

Managing Director  
Commercial Real Estate Services  
438.990.8968  
[manonl@oberfeldsnowcap.com](mailto:manonl@oberfeldsnowcap.com)

\*Chartered real estate broker, DA

**Michelle Marcotte-Blart \*\***

Director  
Commercial Real Estate Services  
514.972.6163  
[michelle@oberfeldsnowcap.com](mailto:michelle@oberfeldsnowcap.com)

\*\*Commercial real estate broker



# Overview

SQUARE FOOTAGE

1,800 SF

ADDRESS

12285-12421 Boul. Rodolphe-Forget, Montreal, QC

AVAILABILITY

Immediate

NET RENT

Ask listing brokers

ADDITIONAL RENT

\$13.33 PSF

SIGNAGE  
OPPORTUNITIES



SURROUNDED BY  
WELL-KNOWN RETAILERS



LOCATED NEAR  
HIGHWAYS 25 AND 40



**OBERFELD  
SNOWCAP**

# Area Demographics

RADIUS : 5KM

2024 Population  
**128,809**

Total Households  
**48,329**

2024 Daytime Population  
**128,225**

Average Household  
Income  
**CA\$104,709**

Median Age  
**41.3**

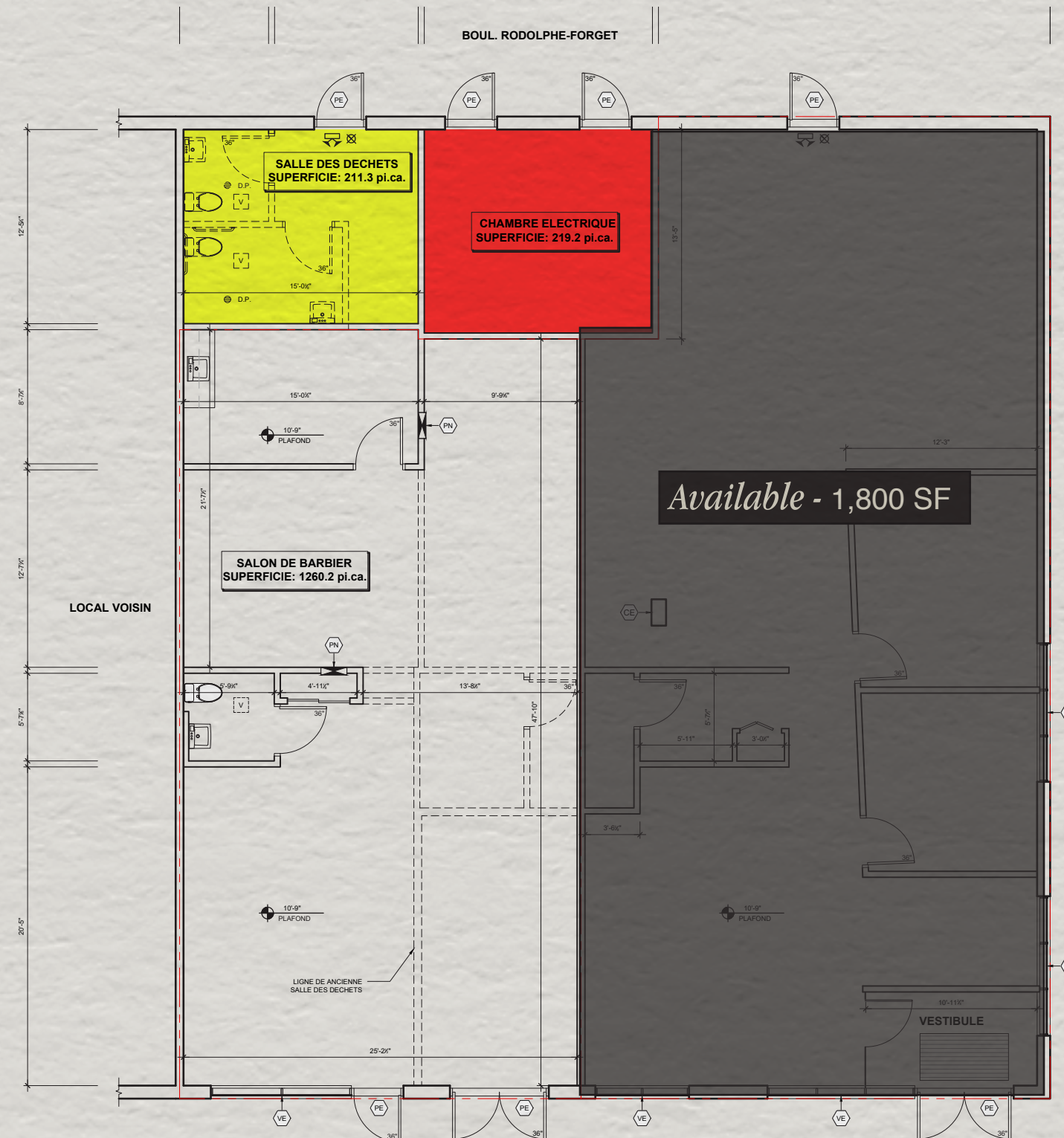
Average Household  
Expenditure  
**CA\$97,125**



*Key Facts*

Demographic Data Source: Environics (2024)

# Plan



# Retailer map



[www.oberfeldsnowcap.com](http://www.oberfeldsnowcap.com)

# OBERFELD SNOWCAP

## **Manon Larose \***

Managing Director  
Commercial Real Estate Services  
438.990.8968  
[manonl@oberfeldsnowcap.com](mailto:manonl@oberfeldsnowcap.com)

## **Michelle Marcotte-Blart \*\***

Director  
Commercial Real Estate Services  
514.972.6163  
[michelle@oberfeldsnowcap.com](mailto:michelle@oberfeldsnowcap.com)