

OBERFELD SNOWCAP

FOR LEASE ↘

1620 Avenue Jules-Vernes

Sainte-Foy, QC

Complexe Santé Sainte Foy

Manon Larose *

Managing Director
Commercial Real Estate Services
438.990.8968
manonl@oberfeldsnowcap.com

*Chartered real estate broker, DA

Michelle Marcotte-Blart **

Director
Commercial Real Estate Services
514.972.6163
michelle@oberfeldsnowcap.com

**Commercial real estate broker



Overview

SQUARE FOOTAGE

1,593 SF - 5,300 SF

ADDRESS

1620 Avenue Jules-Verne, Québec, QC

AVAILABILITY

Fall 2025

NET RENT

Ask listing brokers

ADDITIONAL RENT

Approximately 14 \$ PSF

COMPLETE HEALTH
SERVICES CENTER



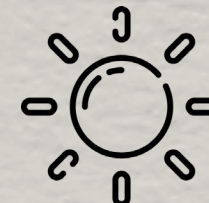
DYNAMIC AND
COLLABORATIVE SPACE



ACCESSIBLE BY PUBLIC
TRANSPORTATION



AMPLE
NATURAL LIGHT



**OBERFELD
SNOWCAP**

Area Demographics

RADIUS : 10KM

2024 Population
375,030

Total Households
176,926

2024 Daytime Population
408,318

Average Household
Income
CA\$113,383

Median Age
44.1

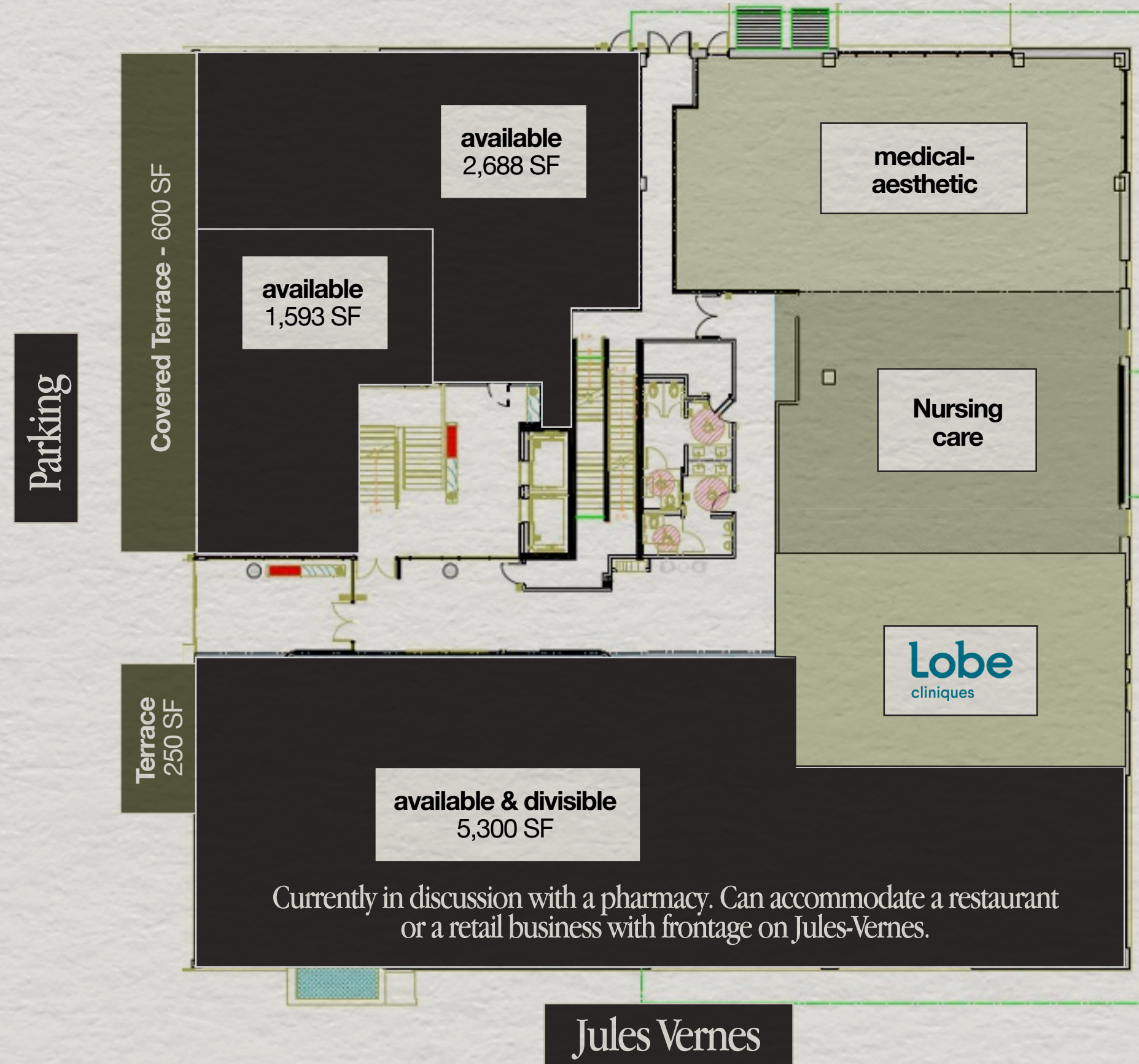
Average Household
Expenditure
CA\$105,515



Key Facts

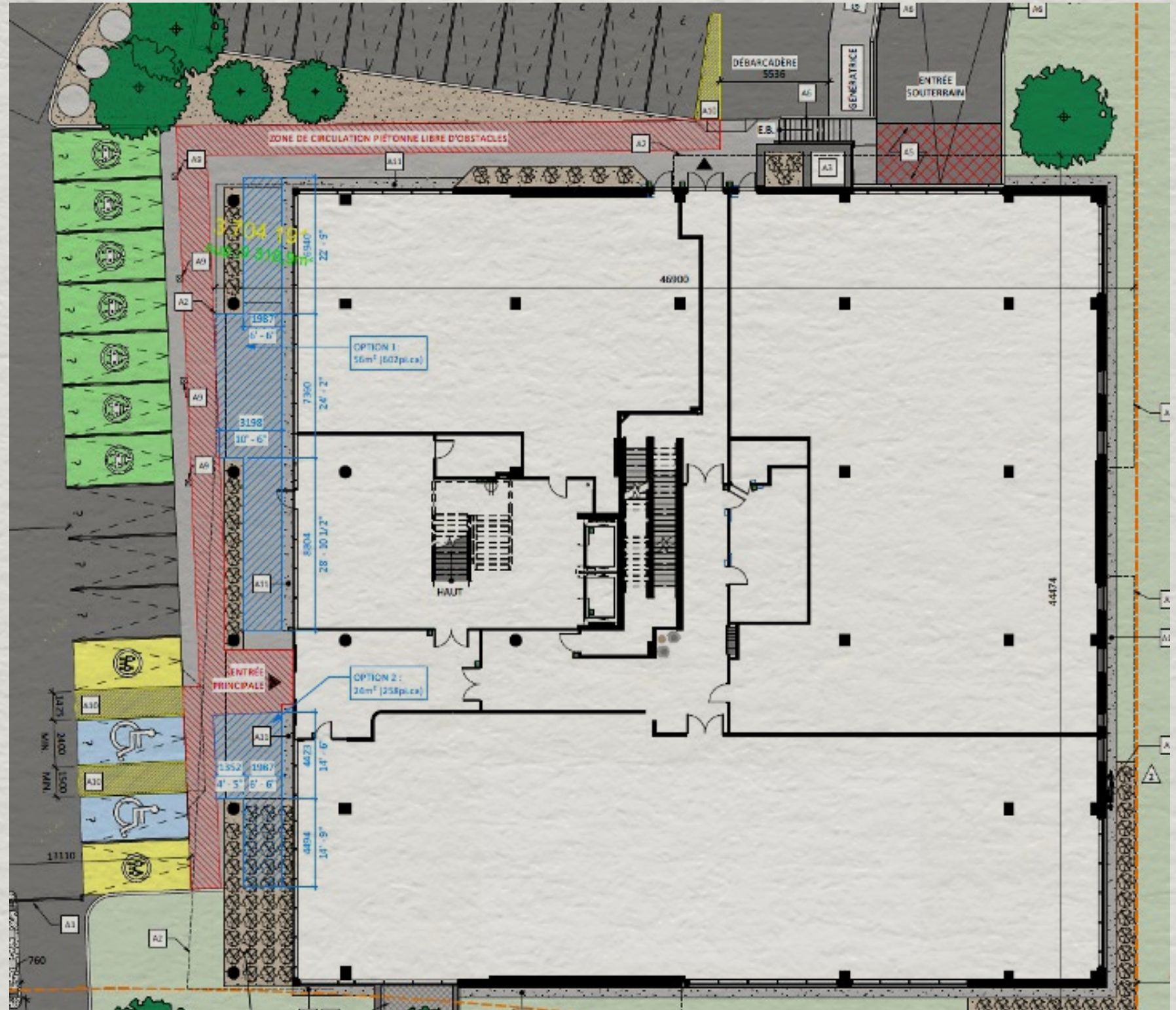
Demographic Data Source: Piipoint

Plan

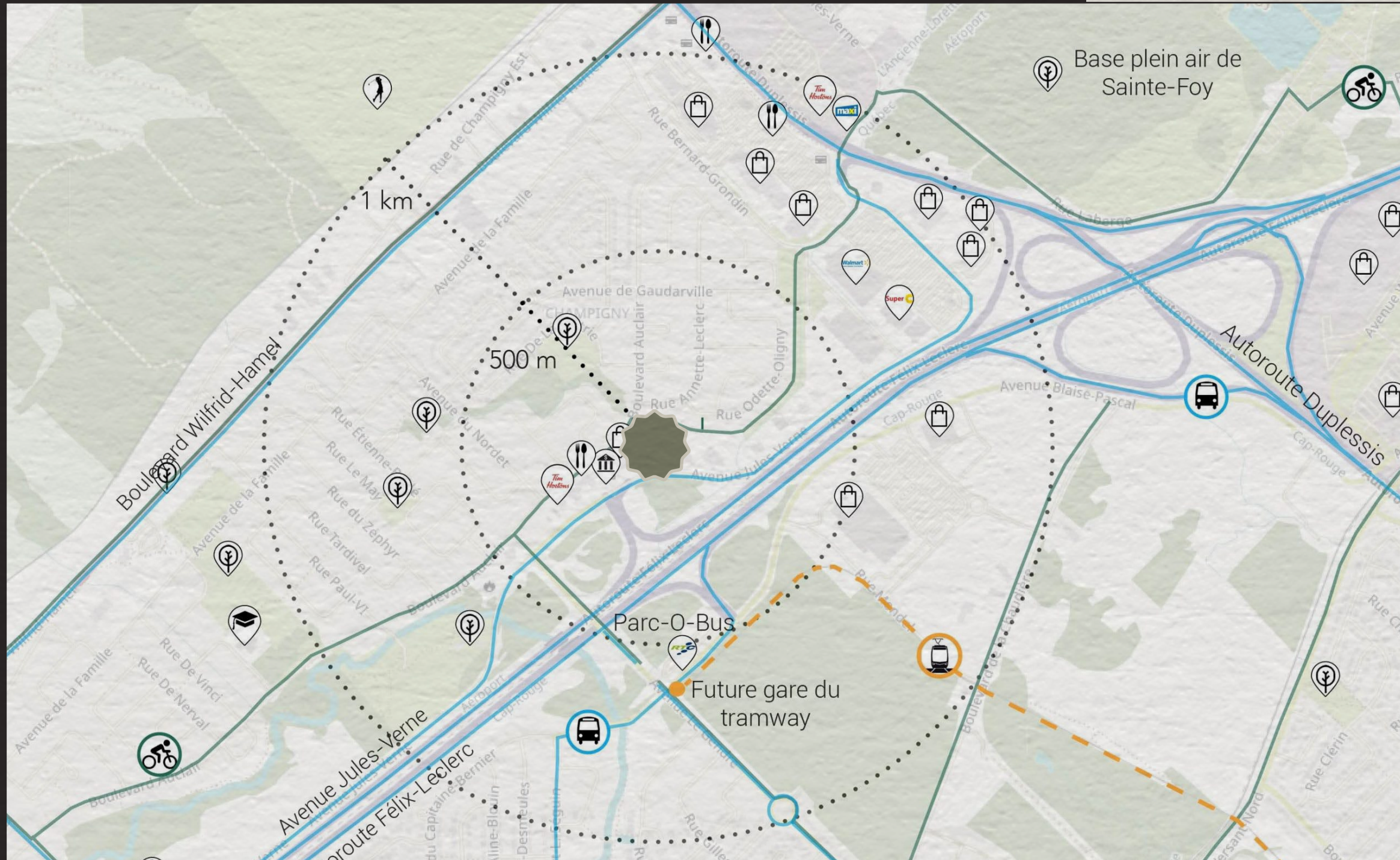


Plan

Access / Terrace Spaces



Map



www.oberfeldsnowcap.com

OBERFELD SNOWCAP

Manon Larose *

Managing Director
Commercial Real Estate Services
438.990.8968
manonl@oberfeldsnowcap.com

Michelle Marcotte-Blart **

Director
Commercial Real Estate Services
514.972.6163
michelle@oberfeldsnowcap.com