

**OBERFELD SNOWCAP**

**FOR LEASE** ↘

**Boul. Sherbrooke E /  
Rue Robert-Chevalier**  
Pointe-aux-Trembles, QC

**Manon Larose \***

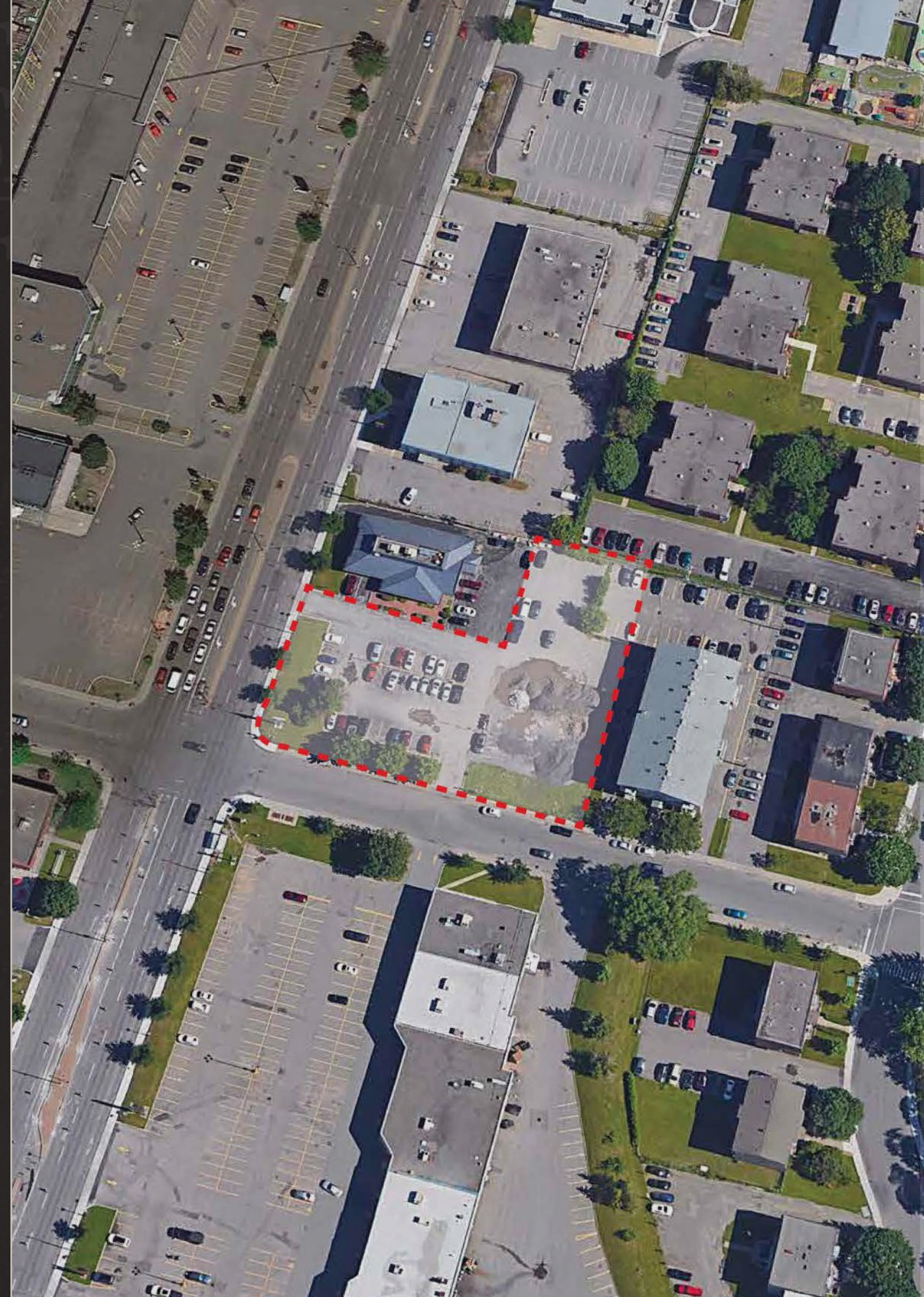
Managing Director  
Commercial Real Estate Services  
438.990.8968  
[manonl@oberfeldsnowcap.com](mailto:manonl@oberfeldsnowcap.com)

\*Chartered real estate broker, DA

**Michelle Marcotte-Blart \*\***

Director  
Commercial Real Estate Services  
514.972.6163  
[michelle@oberfeldsnowcap.com](mailto:michelle@oberfeldsnowcap.com)

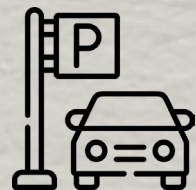
\*\*Commercial real estate broker



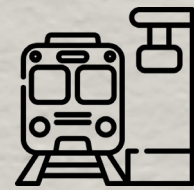
# Overview

SQUARE FOOTAGE	1,327 to 3,482 SF
ADDRESS	Boul. Sherbrooke E /Rue Robert-Chevalier, Pointe-aux-Trembles, QC
AVAILABILITY	Immediate
NET RENT	Ask listing brokers
ADDITIONAL RENT	\$10 PSF

PARKING  
AVAILABLE



REM STATION AT THE CORNER  
OF THE NEXT STREET



SURROUNDED BY  
WELL-KNOWN RETAILER



**OBERFELD  
SNOWCAP**

# Area Demographics

RADIUS : 10KM

2024 Population  
**106,849**

Total Households  
**53,238**

2024 Daytime Population  
**116,605**

Average Household  
Income  
**CA\$83,649**

Median Age  
**46.4**

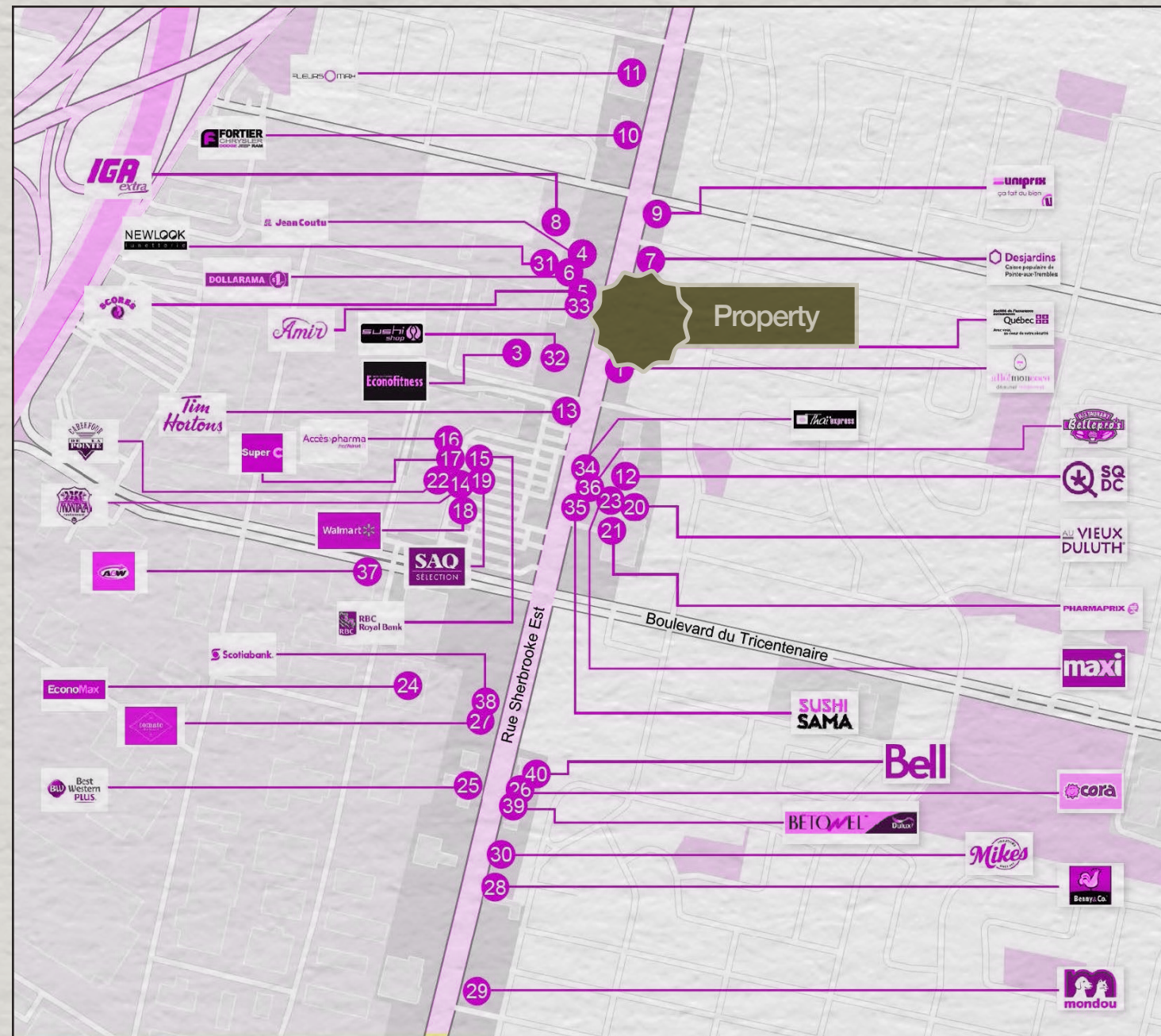
Average Household  
Expenditure  
**CA\$81,872**



## *Key Facts*

Demographic Data Source: Environics (2024)

# Retailer Map



- |                                     |                            |
|-------------------------------------|----------------------------|
| 1. Allô! Mon Coco                   | 21. Pharmaprix             |
| 2. SAAQ                             | 22. Carrefour de la Pointe |
| 3. Éconofitness                     | 23. Maxi                   |
| 4. Jean Coutu                       | 24. EconoMax               |
| 5. Rôtisserie Scores                | 25. Best Western Plus      |
| 6. Dollarama                        | 26. Cora déjeuners         |
| 7. Caisse Desjardins de             | 27. Tomate Basilic         |
| 8. IGA extra Godin Family           | 28. Benny&Co.              |
| 9. Uniprix                          | 29. Mondou                 |
| 10. Fortier Chrysler Dodge Jeep Ram | 30. Toujours Mikes         |
| 11. Fleurs-O-Max Inc                | 31. Newlook                |
| 12. SQDC                            | 32. Sushi Shop             |
| 13. Tim Hortons                     | 33. Amir                   |
| 14. Restaurant Montaza              | 34. Thai Express           |
| 15. RBC                             | 35. Sushi Sama             |
| 16. Accès pharma                    | 36. Belle Pro's            |
| 17. Super C                         | 37. A&W                    |
| 18. Walmart                         | 38. Scotia Bank            |
| 19. SAQ Selection                   | 39. Bétonel-Dulux          |
| 20. Au Vieux Duluth                 | 40. Bell                   |

[www.oberfeldsnowcap.com](http://www.oberfeldsnowcap.com)

# OBERFELD SNOWCAP

**Manon Larose \***

Managing Director  
Commercial Real Estate Services  
438.990.8968  
[manonl@oberfeldsnowcap.com](mailto:manonl@oberfeldsnowcap.com)

**Michelle Marcotte-Blart \*\***

Director  
Commercial Real Estate Services  
514.972.6163  
[michelle@oberfeldsnowcap.com](mailto:michelle@oberfeldsnowcap.com)