

**OBERFELD SNOWCAP**

**FOR SALE** ↘

# At the intersection of Talbot & Road 73

Stoneham, QC

*Norhab Project*

**Manon Larose \***

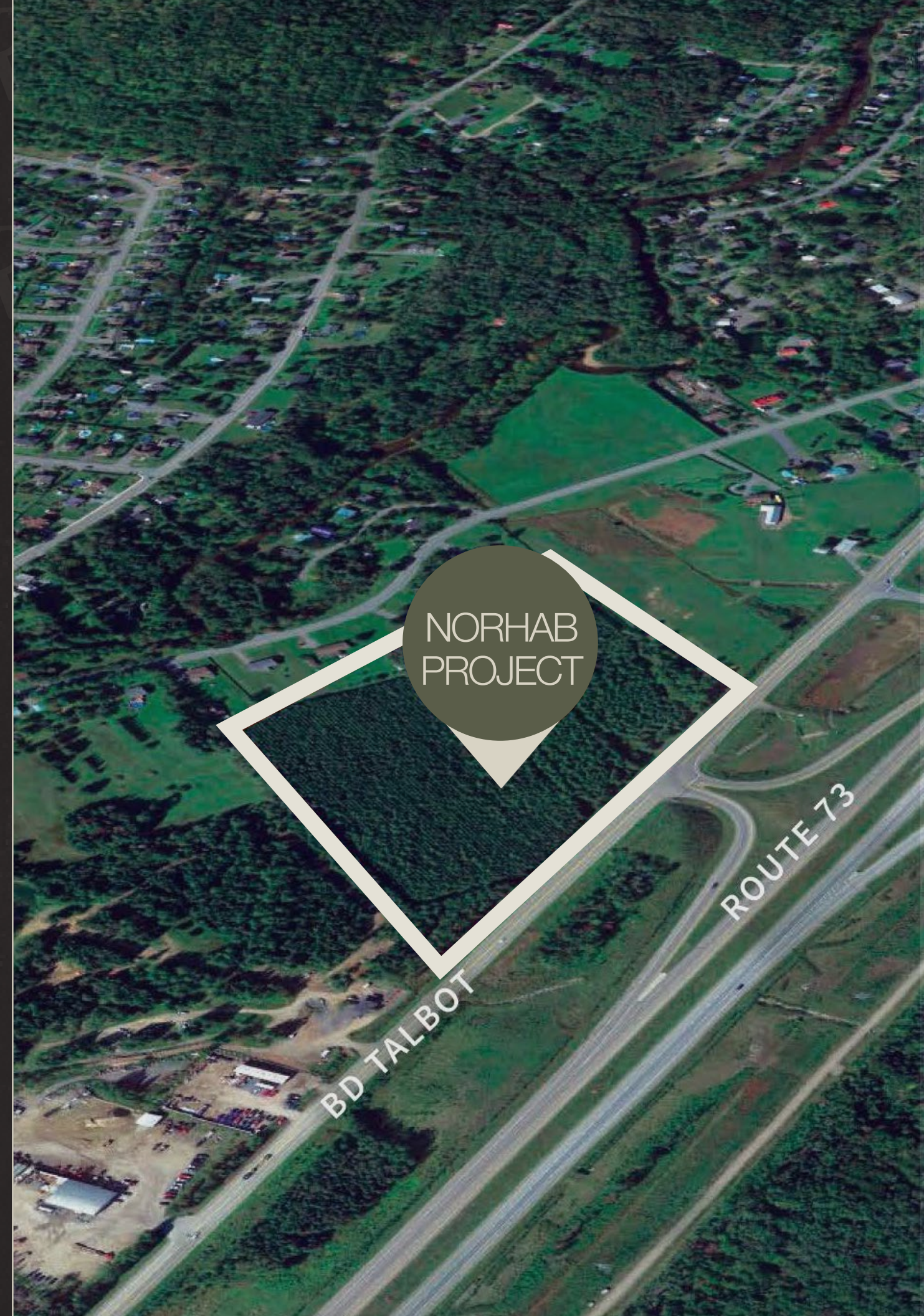
Managing Director  
Commercial Real Estate Services  
438.990.8968  
[manonl@oberfeldsnowcap.com](mailto:manonl@oberfeldsnowcap.com)

\*Chartered real estate broker, DA

**Michelle Marcotte-Blart \*\***

Director  
Commercial Real Estate Services  
514.972.6163  
[michelle@oberfeldsnowcap.com](mailto:michelle@oberfeldsnowcap.com)

\*\*Commercial real estate broker



# Overview

SQUARE FOOTAGE

Up to: 150,000 SF

ADDRESS

At the intersection of Talbot & Road 73, Stoneham, QC

AVAILABILITY

Immediate

NET RENT

Ask listing brokers

ADDITIONAL RENT

Ask listing brokers

20 MIN FROM  
QUÉBEC CITY



TOURISTIC CENTRE  
+ 1,000 VISITORS/YEAR



WELL-KNOWN  
RETAILER



DIRECT EXIT FROM  
HIGHWAY 73



**OBERFELD  
SNOWCAP**

# Area Demographics

RADIUS : 10KM

2024 Population  
**25,388**

Total Households  
**10,143**

2024 Daytime Population  
**16,178**

Average Household  
Income  
**CA\$151,512**

Median Age  
**42.0**

Average Household  
Expenditure  
**CA\$152,110**



## Key Facts

Demographic Data Source: Environics (2024)

# Nearby Attractions



[www.oberfeldsnowcap.com](http://www.oberfeldsnowcap.com)

# OBERFELD SNOWCAP

## **Manon Larose \***

Managing Director  
Commercial Real Estate Services  
438.990.8968  
[manonl@oberfeldsnowcap.com](mailto:manonl@oberfeldsnowcap.com)

## **Michelle Marcotte-Blart \*\***

Director  
Commercial Real Estate Services  
514.972.6163  
[michelle@oberfeldsnowcap.com](mailto:michelle@oberfeldsnowcap.com)